

Interpret Function Notation in Real World Scenarios

Name _____ Period: _____ Date: _____

Directions: Use the information given to solve each problem.

1. Let $g(x) = 12x + 50$ represent the revenue function, where x is the number of concert tickets sold. Which statement is true of $g(100)$?

- A. It results in 1,250 and means that \$1,250 was earned in revenue.
 - B. It results in 1,250 and means that 1,250 tickets were sold.
 - C. It results in 1,200 and means that \$1,200 was earned in revenue.
 - D. It results in 1,200 and means that 1,200 tickets were sold.
-

2. Let $h(x) = 8x - 20$ represent the cost function for producing x units of a product. Which statement is true of $h(50)$?

- A. It results in 380 and means that \$380 is the total cost of production.
 - B. It results in 380 and means that 380 units were produced.
 - C. It results in 400 and means that \$400 is the total cost of production.
 - D. It results in 400 and means that 400 units were produced.
-

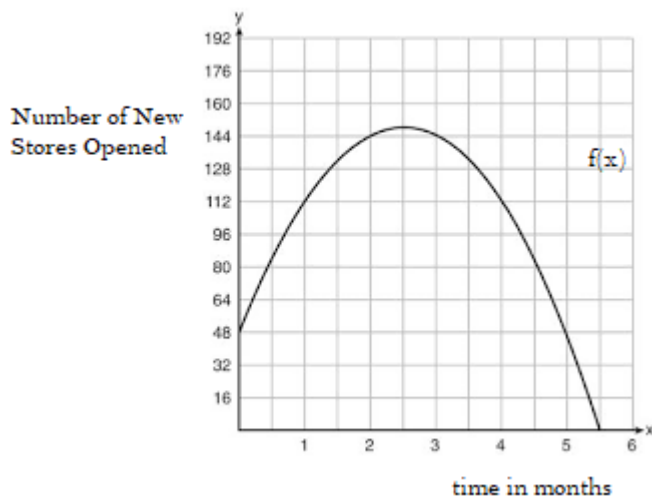
3. Let $q(x) = 5x - 15$ represent the profit function for selling x pastries. What does the 25 in $q(25)$ represent?

- A. It represents the profit made from selling pastries.
 - B. It represents the cost of producing pastries.
 - C. It represents the number of pastries sold.
 - D. It represents the price of one pastry.
-

4. Let $r(x) = 20x + 200$ represent the total revenue function for x subscriptions sold. What does the 150 in $r(150)$ represent?

- A. It represents the total revenue earned.
- B. It represents the number of subscriptions sold.
- C. It represents the cost of each subscription.
- D. It represents the profit from selling subscriptions.

5. The graph below shows the function $f(x)$. This function represents the number of new stores opened in city over a period of six months. Explain what does $f(3)$ represents.



- A. There will be 0 new stores opened during month 48.
- B. There will be 48 new stores opened during month 3.
- C. There will be 3 new stores opened during month 144.
- D. There will be 144 new stores opened during month 3.

Interpret Function Notation in Real World Scenarios

Answer Key

1. A
2. A
3. C
4. B
5. D